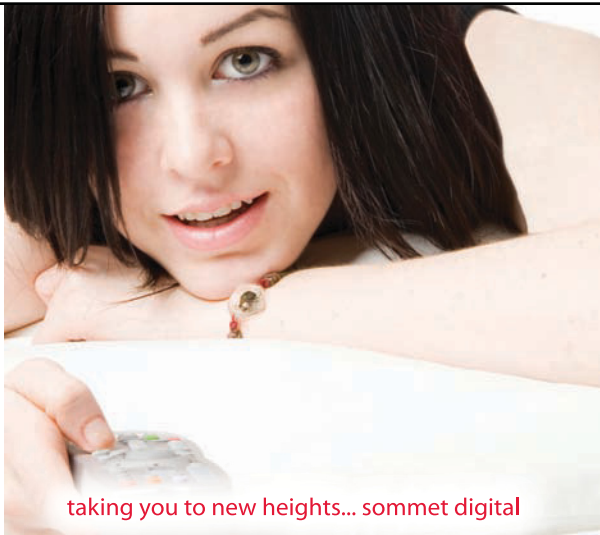


SOMMET

freeview



taking you to new heights... sommet digital

DIGITAL SET TOP BOX



USER'S MANUAL

SAFETY PRECAUTIONS

Please read and keep the following safety precautions carefully for your safety.

- The power must be 90 to 250 volts. Check it before connecting the digital receiver to the wall outlet. For the power consumption of the digital receiver, refer to Table 1.1
- The wall outlet should be installed near the receiver and should be easily accessible.
- When setting up the receiver, make sure that it is in a horizontal position.
- Do not expose the receiver to moisture. The product is designed for use in dry rooms. For outdoor use, please make sure that it is protected from moisture such as rain or splashing water.
- Do not place any vessel or container of liquid such as a vase on the receiver.
- Use only dry clothes when cleaning the receiver.
- Do not place the receiver near heating units or in direct sunlight, as this could impair the product's cooling system. Place the receiver on a hard plane surface. Do not stack any objects such as magazines or other electronic equipments on the receiver. When placed in a cabinet, make sure there is a minimum space of 10 cm around it. For the physical specification of the receiver, refer to Table 1.2.
- Keep the power cord safe from being stepped on or pinched. Protection of the receiver's mains connectors is recommended.
- Never remove the digital receiver case under any circumstances. Warranty claims are excluded for the damage resulting from improper handling.

- Refer all services to qualified service agents. Repair service is required when the digital receiver has been damaged in the following cases: the power-supply cord or plug is damaged, liquid has been spilt or objects have fallen into the receiver, the product has been exposed to rain or moisture, the product does not operate normally, or has been dropped.

Table 1.1

Input Voltage	90 – 250V AC, 50/60 Hz
Power Consumption	Operating : Max. 20 W Standby : 7 W

Table 1.2

Size	180 × 35 × 110mm.
Weight	0.3 Kg
Operation Temperature	0 – 45 degrees Celsius
Storage Humidity	5 – 90 % RH

CONTENTS

CHAPTER 1	4
1.1 INTRODUCTION	4
1.2 CONTROLLING THE DIGITAL RECEIVER	5
<i>1.2.1 The Front Panel</i>	<i>5</i>
<i>1.2.2 The Rear Panel</i>	<i>6</i>
<i>1.2.3 Remote Control</i>	<i>7</i>
CHAPTER 2	9
INSTALLATION	9
2.1 PACKING CONTENTS	9
2.2 CONNECTING TO THE CABLE RECEIVER	9
2.3 INSERTING BATTERIES IN THE REMOTE CONTROL	10
CHAPTER 3	11
INITIAL MENU SCREEN	11
CHAPTER 4	14
MAIN MENU	14
4.1 PREFERENCES	14
4.2 PARENTAL CONTROL	16
4.3 FAVOURITES	17
4.4 TUNING	19
4.5 SYSTEM	19
CHAPTER 5	22
DAILY USAGE	22
5.1 BROWSING SERVICES	22
5.2 FAVORITE SERVICE	23
5.3 VIEWING PROGRAM INFORMATION	23
5.4 ELECTRONICS PROGRAM GUIDE	24
5.5 TROUBLESHOOTING	25

CHAPTER 1

1.1 Introduction

Thank you for your purchase of your Sommet Freeview Satellite Receiver. This user manual will take you step by step with the set up process of your receiver.

The SSATNZ1 digital receiver is fully compliant with the international Digital Video Broadcasting (DVB) standard, can receive digital broadcasting and it is Freeview Approved in New Zealand. The SSATN1 digital receiver has the following features:

- The digital receiver is able to memorize up to 5000 television and radio services.
- Has an electronic program guide (EPG) that provides an overview of scheduled programs.
- You can edit the service list and make your own favorite service list.
- You can view the information of a current television or radio program.

NOTE

In general we equate a channel with a frequency. Unlike analogue broadcasts, however, digital broadcasts are not all assigned to their own frequencies; instead, multiple television broadcasts are transmitted through a single frequency. The frequency in digital broadcasting is usually called transponder. To reduce confusion in this manual, the word **service** is preferably used than **channel** as a term to indicate one television or radio broadcast.

1.2 Controlling the digital receiver

You can control the digital receiver with the remote control and the front panel buttons.

1.2.1 The Front Panel



1.2.2 The Rear Panel



1. LNB IN	Satellite broadcasting signal input socket.
2. AUDIO L/R	Stereo audio output socket for the television set or the audio system. (white / red)
3. VIDEO	Composite video output socket for the television set. (yellow)
4. AC INPUT	Power Cord Socket.
5. IR	IR Socket.

Table 1.1 Connectors Specification

AV RCA	Video CVBS Output (yellow)
	Audio L/R Output (red & white)

1.2.3 Remote Control



1. **[POWER]** button switches the digital receiver between standby mode and operation mode.

2. **[MUTE]** button mutes the sound. Press again to switch it back on.

3. **Numerical [0] – [9]** buttons are used to enter a service number for service change or to specify values for menu options.

4. **[BACK]** button switches between the current service and the previous channel.

5. **[EPG]** button displays the electronic program guide.

6. **[PAUSE]** Pauses the service.

7. **[EXIT]** button is used to exit the current screen.

8. **▲, ▼** buttons switch to previous or next service. They are also used to navigate in menus and interactive screens.

9. **◀, ▶** buttons decrease or increase the volume. They are also used to change values for menu options.

10. **[OK]** button displays the services list. It is also used to select a menu item.

11. **[MENU]** button displays the main menu.
12. **[TV/R]** button switches between television services and radio services.
13. **[FAV]** button displays the favorite lists.
14. **P +/-** buttons switch to previous or next channel.
15. **V +/-** buttons decrease or increase the volume.
16. **[INFO]** button displays the service information box. It is also used to display more information about a program.
17. **[AUDIO]** button is used to select an audio track and a sound mode.
18. **☰** This buttons as different functions per menu. They will be guided by on-screen help.
19. **RED, BLUE, GREEN, YELLOW** buttons are for MHEG functions
20. **[ALERT]** button displays the Set Reminder menu.
21. **['I']** Brings up the index on Teletext

CHAPTER 2

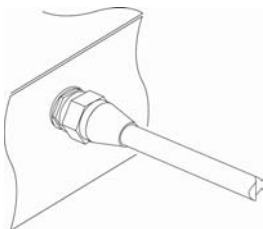
INSTALLATION

2.1 Packing Contents

- Power Cord
- One copy of this user manual
- Remote control unit with 2 batteries (AAA 1.5 V)

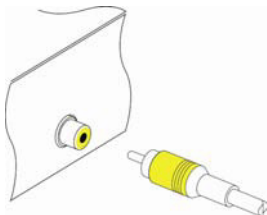
2.2 Connecting to the Cable Receiver

There are several ways to set up the digital receiver. Set up the digital receiver suitably to your television and other appliances. If you have any problem with your setup or need help, contact your dealer.



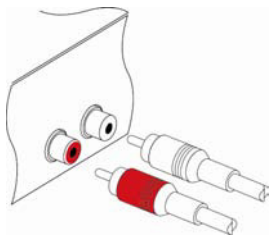
Connecting the Antenna

Connect the antenna cable to the **LNB IN** socket on the receiver so that it can receive digital television services.



To use the composite video connector

You need to obtain a composite video cable (RCA cable) to use the composite video connector. Plug one end of the cable into the **VIDEO** (yellow) socket on the digital receiver, and the other end into the matching socket on your television.



To connect the audio connectors

You need to obtain an audio cable (RCA cable) to connect the audio connectors. Plug one end of the cable into the **AUDIO L** (white) and **AUDIO R** (red) sockets on the digital receiver, and the other end into the matching sockets on your television or audio system.

2.3 Inserting batteries in the remote control

To insert the batteries, open the battery compartment by removing the lid, and then insert the batteries observing the polarity, which is marked on the base of the battery compartment. Close the battery compartment. If the digital receiver no longer reacts properly to the remote control commands, the batteries may be flat. Be sure to remove used batteries. The manufacturer accepts no liability for damage resulting from leaking batteries.

NOTE

Batteries, including those which contain no heavy metals, may not be disposed with household waste. Please dispose used batteries in an environmentally sound manner. Find out about the legal regulations which apply in your area.

CHAPTER 3

INITIAL MENU SCREEN

When you turn on the receiver for the first time you will see the menu below.



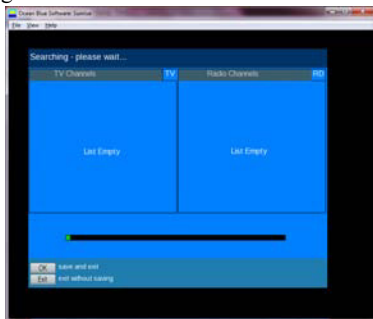
On this screen you will be asked for the following information, please choose the answers that are most fitting to you:

Where are you? Northland/ Auckland/ Waikato/ Rotorua/ Bay of Plenty/ Taupo

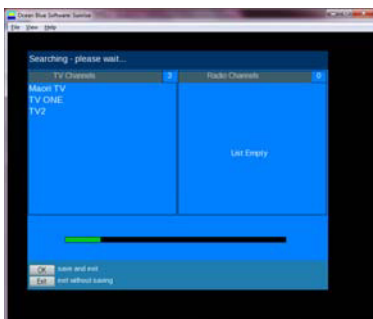
LNB Type: 10.600mhz/ 11300mhz (if you are not sure on this you can try to install on one option and if this does not scan any services try the other option).

Aspect ratio: 4.3 (Generally older CRT TV's) 16.9 (Generally Plasma, LCD and LED TV's)

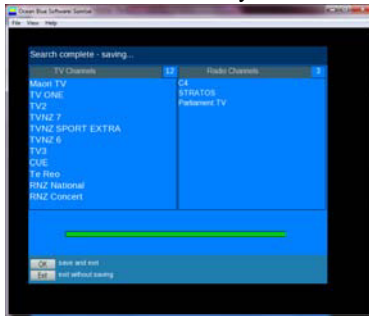
Once you have finished this press the **[OK]** button which will save and exit you to the scanning of the services. You will see the screen below:



The green percentage bar will move across the screen and as the services are scanned you will see the following:



Once all of the services have been scanned you will see the following:

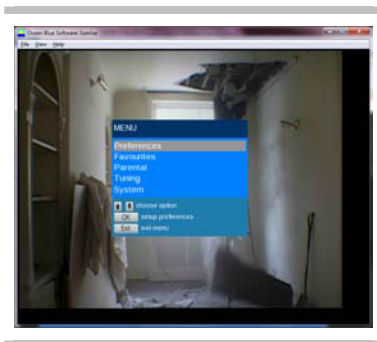


Once you see this, please press the **[OK]** button and this will save the services that have been scanned and exit so you can view the services

CHAPTER 4

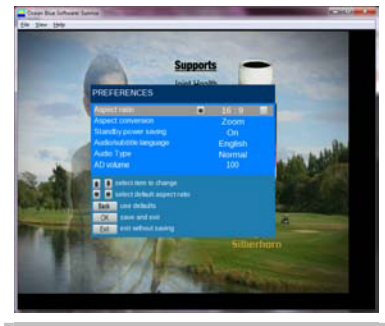
MAIN MENU

In the main menu, you can set functions of the receiver. To enter the main menu, press the [MENU] button. In the main menu, there are five sub-menus. You can change the menu using ▲, ▼ buttons or press the number of menu directly. To exit menu, press [EXIT] button or [MENU] button.



4.1 Preferences

Select the **3 System Setting** menu using ▲, ▼ buttons and press [OK] button . You can change the following:



TV Aspect Ratio

Press ◀, ▶ buttons and select the TV Aspect Ratio to 4:3 or 16:9 according to your television.

Aspect conversion

Press ◀, ▶ buttons and select the Display Format.

Standby power setting

Press ◀, ▶ to turn the standby power setting to On/Off

Audio/ Subtitle Language

Press ◀, ▶ buttons and select English/ Maori

Volume Type

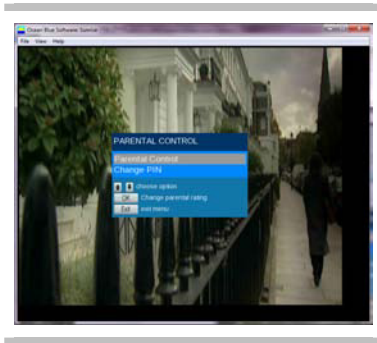
Press ◀, ▶ button and select the volume type.

AD Volume

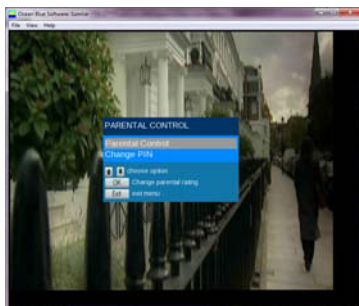
Press ◀, ▶ button, select the default volume that you want(1 to 100).

4.2 Parental Control

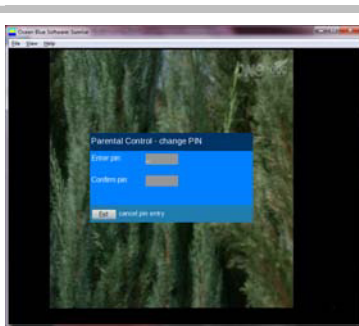
Generally, each television program is classified according to the level of violence, nudity and language of its contents. When you are watching a program, you can check its program classification on the information box. To set your restriction, select the **[1] Parental Control** menu using **▲, ▼** buttons and press **[OK]** button. And using **▲, ▼** buttons select the **1 Parental Level** menu, then press **[OK]** button to enter a PIN (Personal Identification Number) Code. The default PIN Code is “**0000**”.



You can select the age of viewers by pressing **▲, ▼** buttons when the highlight bar is on the **Parental Level** screen. You can restrict viewers aged among G, PGR and AO years old from watching the program, select the **Total Block** option to block all programs or select the **No Block** option to cancel the censorship.

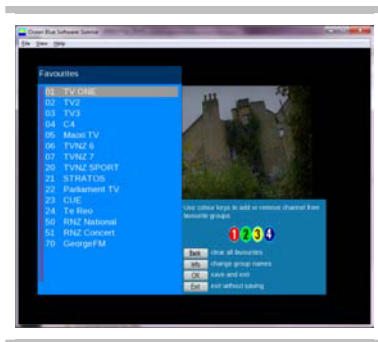


To change the PIN Code, select the [1] **Parental Control** menu and press [OK] button. And using ▲, ▼ buttons select the 2 **Change PIN Code** menu, and then press [OK] button to enter the menu. After entering the new PIN Code, please enter your new PIN Code again.



4.3 Favourites

To edit your favorite lists, move the highlight bar to the **Organizing Favourites** menu. Press any of the coloured keys (red, green, yellow, blue) to add or remove from the favourites group.



To select and edit favourites group press **[INFO]**.

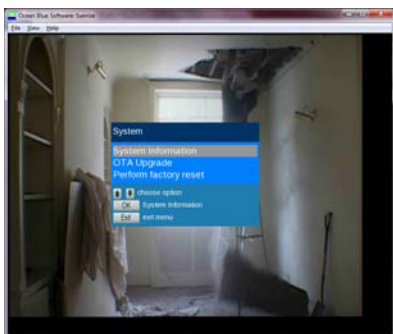


4.4 Tuning

To retune your receiver to the Tuning section on your main menu and please follow the steps in chapter 3 of this user manual.

4.5 System

In the main menu, you can set functions of the receiver. To enter the main menu, press the [MENU] button. In the main menu, there are five sub-menus. You can change the system menu using ▲, ▼ buttons. To exit menu, press [EXIT] button or [MENU] button.



4.5.1 System Information

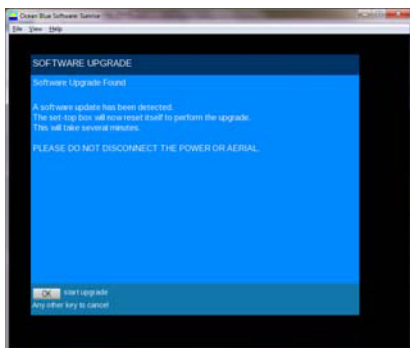
Selecting the system information will bring up the following screen. This is useful as it helps Sommet to support you if you were to have any problems with your receiver.

4.5.2 OTA Upgrade

All Freeview approved products are able to have their operating software updated over the air. The receiver is set a default to automatically accept these updates and it is recommended that you do not change this setting. From here you can also check if there is an over the air download.

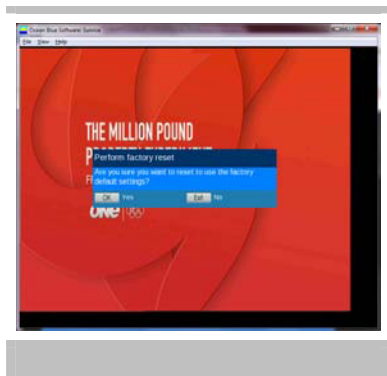
4.5.2.1 Download Software

The digital receiver has provided users with a stable and convenient firmware. However, the new firmware may be released to improve receiver's performance and will be sent via and over the air download. If there is download sent you will see the following screen. Please press the **[OK]** button to accept.



4.5.3 Factory Setting

Move the highlight bar to the **Factory Setting** menu and press **[OK]** button. Then you get asked for confirmation. If you select the **Yes**, all the preference parameter will be deleted and the digital receiver will be reset to the manufacturer's factory setting.

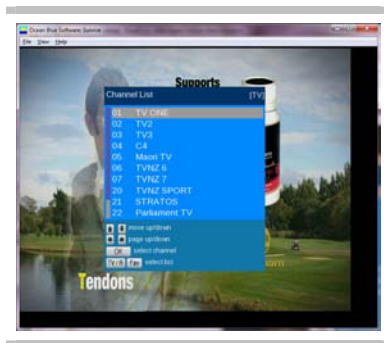


CHAPTER 5

DAILY USAGE

5.1 Browsing Services

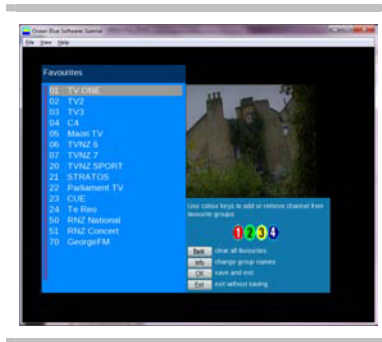
Pressing [OK] button displays the services list. Select your desired service using ▲, ▼ buttons and press [OK] to confirm your selection. Press [RECALL] button to go back to the previously watched service. You can change services with the numeric buttons on the remote control.



- You can sort the service list alphabetically by pressing the [Green] button.

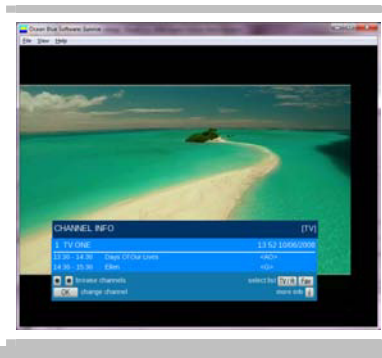
5.2 Favorite Service

To view the favorite list, press [FAV] button. Move the highlight bar to select **Favorites** using ▲, ▼ buttons. Move the highlight bar to the desired service using ◀, ▶ buttons and press [OK] button to confirm your selection.



5.3 Viewing Program Information

To view program information, press [INFO] button. Information box of the program will appear on the screen. To view synopsis of the program, press [INFO] button again.

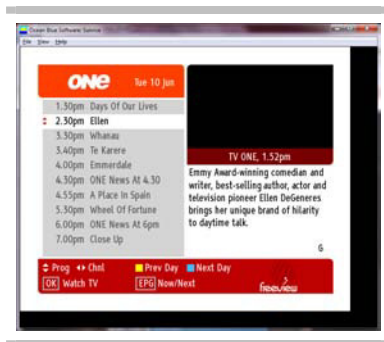




- To exit from the information screen, press **[EXIT]** button.

5.4 Electronics Program Guide

To view the Electronic Program Guide, press **[EPG]** button.



To view details of the previous or next program, move the highlight bar to the selected program and press **[INFO]** button. To switch to other services, press **◀, ▶** buttons. You can travel over previous days with the **[Yellow]** button, and can travel over next day with the **[Blue]** button. To watch TV press the **[OK]** button. You can view what is on now and next by pressing the **[EPG]** button.

5.5 Troubleshooting

In order to save time or make your digital receiver recover to normal functioning, you can launch a troubleshooting by yourself by consulting the table below. In case of a failure to recover your receiver, do not attempt to modify or change the receiver's system by yourself. It is highly recommended that you should contact our nearest customer's service center.

Problem	Solution
No signal from the remote control	- Check whether the power of your receiver is on or not. - Check the remote control's batteries.
No light on the front panel	- Check if the power cord is properly plugged.
Red light is shown on the front panel	- Press [POWER] button on the remote control to change the Standby Mode to the Operation Mode.
No response	- Turn off the receiver and restart. If there is still no response, contact Customer Service Center.
Lines appear on every service channel	- Contact Customer Service Center.
No video picture	- Check if your television works properly. If so, contact Customer Service Center.

Problem	Solution
No audio sound	<ul style="list-style-type: none"> - Check the sound volume of your television. - Check the sound volume with other services. - Check if the A/V connectors (red & white) are properly connected. - Take off the Smart Card from the receiver and insert in again. - If there is still no sound, contact Customer Service Center.
Power halting	<ul style="list-style-type: none"> - Disconnect the power plug and reconnect it. - If the power is still halting, contact Customer Service Center.
Blinking video pictures	<ul style="list-style-type: none"> - Check if the cables are connected properly to the receiver. - Check if your television is working properly. - Contact Customer Service Center.

